

Harden Players proudly present...



9-11th and 16-18th March 2023

Harden Congregational Church | [hardenplayers.org.uk](http://hardenplayers.org.uk)



MiraGold

Helping charities and  
organisations reach  
their full potential

- Governance
- Organisational development
- Leadership

Contact us to discuss how MiraGold can help you:

✱ 07709 646723

✱ [info@miragold.co.uk](mailto:info@miragold.co.uk)

[www.miragold.co.uk](http://www.miragold.co.uk)



positive  
peoplehr

**Making Organisations  
Great Places to Work**

#### Our Mission

To help organisations develop a positive people culture and ensure they comply with all relevant employment legislation

#### We offer

- ❖ General HR support
- ❖ Cultural development and employee engagement services

#### We will

- ❖ Help minimise people issues - leaving you more time to build and develop your business
- ❖ Protect your business from time-consuming processes
- ❖ Develop engagement tools that help to reduce attrition, absence and increase productivity



01484 444760

[info@positivepeoplehr.co.uk](mailto:info@positivepeoplehr.co.uk)  
[www.positivepeoplehr.co.uk](http://www.positivepeoplehr.co.uk)

Independence House, Holly Bank Road,  
Huddersfield, HD3 3LX

# MOTHER GOOSE

Like so many things that seem like a good idea at the time, it started in the pub.

I'd been a member of Harden Players for less than four months and we were in the midst of rehearsals for *Treasure Island* (I'd volunteered to help make the teas and somehow found myself up on stage, dressed as a pirate, on all fours and being prodded in the bum by a cutlass – but that's another story!). "I quite fancy writing a panto," I announced in the Fleece one night after a rehearsal, expecting to be laughed into the middle of next week by all of the seasoned pantomime veterans present. In fact, I was encouraged to give it a go. The information that – having written a script – I would also be expected to direct it was held back until I'd finished the thing and it was too late to back out...

I chose to stage the classic pantomime *Mother Goose* because it had never before been performed by Harden Players. It tells the story of a poor woman who longs to be beautiful and her magical goose, Priscilla, who can lay golden eggs. *Mother Goose* is the only pantomime that features a dame as the lead, and has been called the Hamlet of dame roles.

It's been a challenge but nevertheless a thoroughly enjoyable experience. I've loved working on a production that was a first not only for me but for many of those involved. It saw veteran performer Nick Parker step into the dame's high-heeled boots for the first time, while Sarah Murdoch took on her first villain role and Vicky Foster spread her wings in the "skin part" of Priscilla. We also welcomed several new Players into the fold for this production. Rehearsals were filled with warmth, energy and laughter and I enjoyed every second.

If that sounds like fun, we'd love to have you join us! Just visit our new website at [hardenplayers.org.uk](http://hardenplayers.org.uk) for details of how to get involved, or find us on Facebook.

**Lisa Firth**  
**Director, Mother Goose**





# Principals



## Nick Parker – Mother Goose

This is Nick's twenty-fifth year of doing stuff on this stage. You just can't get rid of him! He has appeared in dozens of pantomimes and plays with Harden Players over the years, playing everything from Felix in *The Odd Couple* to Buttons in *Cinderella*. This is the first time he has donned the dame's frock and padded bra, however, and he fears family and friends may never see him the same way again! #MadeYouLook

## Vicky Foster – Priscilla the Goose

Vicky grew up in the Harden Players family and after twenty years away she rejoined the fold in 2018. She never likes to play the same roles back to back so she has gone from fairy godmother to evil cannibal queen; grumpy old man to a golden-egg-laying goose. She just loves the camaraderie and giggles of being with the Players and the challenge of discovering a new role. HONK!



## Kathryn Sulliran – Silly Billy

Kathryn first performed in panto as a child and seventeen pantomimes later, still loves this form of theatre. From principal boy to character parts via baddies and even one principal girl, she is excited to be back in the role of comic for the exceptionally well-written *Mother Goose*. Kathryn's favourite non-panto roles have been Mrs Lyons in *Blood Brothers* (Cutting Edge Theatre) and Cora in HAOS Productions' 2022 performance of *Calendar Girls: The Musical*.

## Sarah Murdoch – Demon of Discontent

Sarah has performed in musicals across Mytholmroyd and Halifax, and has been in multiple Harden pantomimes. Sarah is very excited to return to Harden and be playing the baddie – please boo loudly! Credits include *Treasure Island*, *Snow White*, *Robin Hood*, *Jack and the Beanstalk*, *Rodgers and Hammerstein's Cinderella*, *Camelot*, *Jane Eyre* and *Legally Blonde*.





### ***Charlotte Rerill – Colin***

Charlotte first appeared on stage with Harden Players in 1992 in *Aladdin*, playing a singing frog in the children's chorus. Since then she has acted in dozens of productions and directed her first play in 2018. Although she also treads the boards at Keighley Playhouse, Keighley Musical Theatre Company and Bingley Little Theatre, she always says Harden Players is like coming home.

### ***Rebecca Burbidge – Jill***

*Mother Goose* is Becca's first production with Harden Players, having recently jumped aboard after many years of 'taking a break'. She has been in many pantomime and dance productions over the years, as well as *My Fair Lady*, playing Polly Brown in *The Boyfriend* and Helena in a touring production of *A Midsummer Night's Dream*. She is delighted to have joined such a buoyant, friendly and, well... bonkers crew.



### ***Antony Shenton – Squire Tightwad***

Antony has been appearing in Harden Players productions for over thirty years and has lost count of how many pantomimes he has been a part of, very often in the role of the dame. Most recently, he appeared as snobby ballroom dancer Barry Stewart-Hargreaves in *Hi-de-Hi!* He is very pleased to take on a villain role in this year's production as the greedy and unscrupulous Squire Tightwad, who plots to steal *Mother Goose*'s magical pet Priscilla.

## ***Musical Directors***

### ***Jonathan Addy – Armitage Sheila Shenton***

Sheila has been MD for Harden Players for thirty-five years. She has enjoyed supporting cast members to get the most out of their sound.

Jonathan, an experienced music leader, joined Harden Players last year for *Treasure Island*. He has loved working with the band and behind the scenes.



# Ensemble (in order of appearance)

Fairy Sunshine

Fairy Starlight

Fairy Trevor

Nora

Cora

Rose

Smashem

Grabbem

Run

Jeeves/Darth Gander

50p/Ghost

Fairy Queen

Amanda Petyt

Jane Fenwick

John Hamilton

Mark Foster

Sarah Whistlecraft

Kate Ainsworth

Rachael Lee

Paul Addy-Armitage

Piers Hill

Adam Butt

Sophie Chapman

Ashley Judge



**Adult chorus (as villagers, traders and demon minions):**

Kate Ainsworth, Adam Butt, Sophie Chapman, Mark Foster, Gemma O'Hora, Ashley Judge, Sarah Whistlecraft

**Children's chorus (as villagers, fairy attendants and demon minions):**

Lily Ainsworth, Meredith Ainsworth, Jasmine Butt, Sabrina Butt, Elliot O'Hora, Gracie Pennington, Poppy Pennington, Alex Whistlecraft, Rachel Whistlecraft



# *Backstage Crew*

<b>Stage manager</b>	Eleanor Harvey
<b>Lighting</b>	Philip Goode
<b>Set building manager</b>	Ian Hales
<b>Set construction/props</b>	Jane Baxter, Vicky Foster, Ian Hales, John Penrose
<b>Backdrop design</b>	Heather Lumley
<b>Musicians</b>	Jonathan Addy-Armitage, Matt Bamforth, John Hamilton, Alfie Walls-Shaw
<b>Choreography</b>	Jonathan Addy-Armitage, Jane Fenwick
<b>Make-up</b>	Sophie Chapman
<b>Prompt</b>	Patricia Parker
<b>Publicity</b>	Ksenia Butt, Lisa Firth, Vicky Foster
<b>Programme design</b>	Lisa Firth
<b>Programme printing</b>	Ernest Cummins Printers
<b>Box office</b>	Ksenia Butt, Lisa Firth, Pauline Stern, Harden Post Office
<b>Chaperone coordinator</b>	Jane Gerdes
<b>Producer</b>	Ksenia Butt
<b>Writer/director</b>	Lisa Firth
<b>Assistant director</b>	Kathryn Sullivan
<b>Musical directors</b>	Jonathan Addy-Armitage, Sheila Shenton

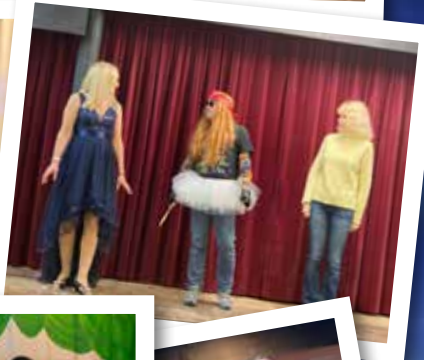
## **We would like to thank:**

Harden Post Office for ticket sales  
Harden Congregational Church for their continued support  
Sarah Whistlecraft and Vicky Foster for making costumes  
John Hamilton for installing the microphones and sound system  
Katy Sugden for offering to plant a tree to offset  
programme printing  
All those who have helped with making props  
and sourcing costume items  
Our team of chaperones  
Everyone who has helped with refreshments  
and front of house during performances  
Our fantastic audiences, without whom none  
of this would be possible!





# Behind the Scenes







# Past productions

**1981**

Cinderella  
The Happiest Days of  
Your Life

**1982**

Aladdin  
When We Are Married

**1983**

Snow White  
Post Horn Gallop

**1984**

Sleeping Beauty  
Brush With a Body

**1985**

Treasure Island  
Sailor Beware!

**1986**

Robin Hood  
Good Old Summertime

**1987**

Jack and the Beanstalk  
Tomb With A View

**1988**

Ali Baba and the Forty  
Thieves  
Bedwitchery

**1989**

Dick Whittington  
Blithe Spirit

**1990**

The Pied Piper  
Stepping Out

**1991**

Cinderella  
Panic Stations

**1992**

Aladdin  
Steel Magnolias

**1993**

Snow White  
Little Shop of Horrors

**1994**

Robin Hood  
Stags and Hens

**1995**

Beauty and the Beast  
Night Must Fall

**1996**

Sleeping Beauty  
Daisy Pulls It Off

**1997**

Peter Pan  
Sorry, Wrong Number  
Woomerang

**1998**

Jack and the Beanstalk  
Return to the Forbidden  
Planet

**1999**

Puss in Boots  
Celebration

**2000**

Cinderella  
The Tree of Life

**2001**

Aladdin  
Jiggery Pokery

**2002**

Goldilocks  
The Happiest Days of  
Your Life

**2003**

Dick Whittington  
Falling Short

**2004**

King Arthur  
Wind in the Willows

**2005**

Sleeping Beauty  
25th Anniversary Show  
Fore!

**2006**

Snow White  
The Importance of Being  
Earnest  
A Christmas Carol

**2007**

Treasure Island  
Macbeth

**2008**

Alice in Wonderland  
Pride and Perfidy

**2009**

Aladdin  
A Mystery Play

**2010**

The Beast of Broad Ford  
The 39 Steps

**2011**

Puss in Boots  
The Odd Couple

**2012**

Cinderella  
The Invisible Man

**2013**

Robin Hood  
Calendar Girls

**2014**

Jack and the Beanstalk  
'Allo 'Allo

**2015**

Snow White  
Murder in the Red Barn

**2016**

Jason and the Golden  
Fleece  
Barghest

**2017**

Hansel and Gretel  
Ghosts Come Calling

**2018**

Little Red Riding Hood  
Murder at Checkmate  
Manor

**2019**

The Curse of the Mummy

**2020**

Cinderella

**2022**

Treasure Island  
Hi-de-Hi!

**2023**

Mother Goose

# *Songsheet*

Sing along with Silly Billy and Priscilla – and don't forget to be as loud as you possibly can-can!



## **My Goose She Can Do The Can-Can**

My goose she can do the can-can

Better than my cat can

But my goldfish finds it very hard to do

Yes my goose she can do the can-can

Better than my cat can

But my goldfish finds it very hard!

## ***Get Involved!***

We're a very friendly society, always on the lookout for new talent – and as you can see, we have a lot of fun! If you can help in any of the following areas, we'd love to hear from you:

Set builders

Costume makers

Scriptwriters

Backdrop painters

Make-up whizzes

Actors

Prop makers

Musicians

Singers & dancers

If you'd like to be involved, there'll be a role for you! Contact us on [hardenplayers@hotmail.co.uk](mailto:hardenplayers@hotmail.co.uk), or find us on Facebook.





**YOUR LOCAL ECO PRINTER**  
**01274 582555**  
**[www.ernestcumminsprinters.co.uk](http://www.ernestcumminsprinters.co.uk)**

**This is to certify that**  
**Ernest Cummins Printers**  
**Limited**

**has supported the planting of**  
**295.64m<sup>2</sup> of native UK woodland**

**to remove 11,826 kgs of**  
**Carbon Dioxide**  
**October - December 2022**

**Woodland**  
**Carbon from the**  
**Woodland Trust**  
**Putting nature first**



**WOODLAND**  
**TRUST**

The Woodland Trust logo is a registered trademark. The Woodland Trust is a charity registered in England and Wales number 294344 and in Scotland number SC038885.

A risk profit making company limited by guarantee. Registered in England number 1902873. [ernest.co.uk](http://ernest.co.uk)